



Charity No 1155593

Newsletter No 158

March 2026

In this Issue

Monthly Meeting	2
Summary of Activities and Outings in coming months	2 - 5
Membership Information	5
News from the Groups	6 - 14
Committee and Contacts	15
Groups Timetable	16

Welcome to the March edition of our monthly newsletter. Inside you will find news and information about our Swanley and District u3a, including reports from some of our interest/study groups and news about future events. Writing this in the last week of February, dare I say that the temperature outside is getting just a little bit less cold? Does the arrival of March mean that spring is knocking on the door? It would be good to think so.

You can now pay your membership fee for 2026-27. Indeed 84 of you have already done so. The cost is still only £20 for the year – equivalent to £1.67 per month or 38p per week. I hope you agree that is good value for money! Speak to Gill Baker, our Membership Secretary, if you have any questions about membership and methods of payment. She will be taking membership renewals at the March meeting. There are several events and outings being planned by Penny Collins, Veronica Brazier and other members of the Social Committee. Details can be found in the newsletter and you can speak to one of the organisers at the back of the hall at the monthly meeting.

Now for an important notice about our monthly meetings. The March meeting will as usual be on the 1st Friday of the month – March 6th. However, the 1st Friday in April is Good Friday, so we have moved the April meeting to the 2nd Friday of the month and it will now take place on Friday April 10th at the usual time and place. Please put that change of date in your diary.

147 of you attended our February meeting. I hope you all enjoyed Christoph Bull's talk on some great women of Gravesham. This month we are pleased to welcome back Andy Thomas, another of our more popular speakers. He spoke to us just a few months ago about Lewes and its Bonfire festivities and is returning this month with a talk entitled A Conspiracy History of the World, asking the questions why do so many people believe in conspiracies, despite all the denials, and what is the real evidence to support them? There are conspiracy theories going back as far as the Roman Empire and the Gunpowder Plot, as well as events in our lifetimes such as the murder of JFK, the Moon landings, Watergate, the death of Princess Diana and 9/11. I like to think I have an open mind and am looking forward to an interesting morning. I look forward to seeing you at the Alexandra Suite on Friday March 6th in time for our usual start at 10.30am.

Dave Collins Chairman

Reminder!

Please switch your mobile phone to silent mode during the meeting

**Swanley and District U3A Monthly Meeting Friday 6th March at 10.30am
At the Alexandra Suite, St Mary's Road, Swanley BR8 7BU**

Friday 6th March: Andy Thomas 'A Conspiracy History of the World'

Why do so many people believe in conspiracies, despite all the denial, and what is the real evidence to support them? Andy Thomas tells the remarkable story of conspiracy theory, as seen through the eyes of those who challenge the establishment version of events, taking in everything from the Roman Empire, the Gunpowder Plot and the World Wars, to JFK, Watergate, the Moon landings, Princess Diana, 9/11, the 'New World Order' and other significant controversies in a fascinating journey which demonstrates why people question – whatever the truth.

Friday 10th April: Bob Ogley 19th Century Kent

Bob will be telling stories about Dickens, Darwin, the coming of the railway, the industrial revolution and the notable men and women who lived in that amazing century.

Nicola Teoh

SUMMARY OF ACTIVITIES – During the Coming Month(s)

Bridge Club

The next monthly meeting is on Wednesday 4th March at 10.00am.

If you are interested in playing Bridge, please registered your interest via the group page on our website as at the present time the group is full. https://swanley.u3asite.uk/u3a_groups/bridge/.

Carolyn & Colin Chapman

Board & Card Games

Next meeting is Monday 23rd March 2026 at 2pm at the Howard Centre in Hextable BR8 7LG.

We have a good selection of games and cards. Please bring along any games that you would like to play. At the moment Scrabble is very popular so if you are interested in playing do come and join our players. As we hire the room there is a £3 charge, drinks can also be purchased at the centre.

Just come along on the day or email for further details via the Board & Card group page on our website for further information. https://swanley.u3asite.uk/u3a_groups/board-card-games/

Joyce Wood

London Off the Beaten Track Walks

We hope to recommence these towards the end of March with next walk being 'The Woolwich Arsenal Site and parts of Old Woolwich'. Details will be e-mailed out to those on the distribution list. If you would like to be added please sign up at our monthly meeting or via the website at:

https://swanley.u3asite.uk/u3a_groups/london-history-walks/

Alan Hayward

QUIZ DATES

There are **2 Quiz afternoons** this month.
(£3 per person with all profits going to the RNLI):

Tuesday March 3rd – 2pm

Thursday March 19th – 2pm.

Please join us at the **Howard Venue** if you would like to join a U3A team on either of these dates.

David Collins

MARCH NEWSLETTER

For the March newsletter can you please send articles and photos by **Thursday 26th March**

Alan Hayward



Events and Outings

Saturday 21st March Murder Evening with Fish 'n Chips supper – Five Wents Hall, Swanley

Alternative Shadow Players who performed at our murder evening last year, will perform another play entitled **Scrum Down to Murder** and we have to guess whodunnit.

Cost: £22 including a fish 'n chips supper in the middle of the evening.

Meet from **7pm** for a **7.30 start**.

Please pay at the March meeting if you have not already done so.

THIS EVENT IS NOW FULL

Please bring drinks, cutlery and any sauces you require for the fish 'n chips.

Any issues speak to Penny or contact her via website:

https://swanley.u3asite.uk/u3a_events/murder-mystery-evening/

Penny Collins

April

Tuesday April 14th Milestones Living History Museum, Basingstoke

[\(https://www.milestonesmuseum.org.uk/\)](https://www.milestonesmuseum.org.uk/)

From cobbled streets to a seaside pier, vintage cars, an operating pub, sweet shop and more, this covered museum details life from Victorian times to the 1940s.

In the life-sized streets you'll find buildings, shops and vehicles recreated and restored, telling the stories of how people lived, the things they used and the work they did. The milliner, saddler and ironmonger all offer a glimpse into shopping habits of the past.

In some shops you will find interpreters, dressed in authentic period costume, serving beer in the Baverstock Arms, playing a record in the gramophone shop or telling stories about the past.

For enthusiasts there is an impressive collection of restored vintage vehicles including steam lorries, cars, motorbikes, a Romany caravan and a 19th century steam-powered fire engine

The Rooftops Café serves lighter bites & main meals at reasonable prices and there is, of course, a gift shop.

If you wish to purchase sweets from the 1940s shop you will need to buy a £2 voucher at the entrance.

Cost: £34

Leaving Hextable at **8.30am** & Swanley at **8.45am** for the 2 hour coach journey to Basingstoke.

Returning to Swanley at approximately **5.45pm**.

As we only have two meetings before this trip, you can either book at the next monthly meeting or direct with me via the website at: https://swanley.u3asite.uk/u3a_events/milestones-living-history-museum-basingstoke/

Veronica Brazier

14th May The Holland Park Set – Politics & Painters

In 1939, one of the last great pre-war London balls saw the King and Queen's car join a queue of grand cars that stretched from Hyde Park Corner to Kensington High Street and the gates of Holland House.

Within a year Holland House had been all but destroyed in the Blitz. Here had thrived one of London's most influential political salons and a circle of wealthy Victorian artists built studio houses as parcels of garden were sold off to fund the owner's lavish lifestyle.

We shall arrive at 10.30am and will have time to buy morning refreshments in the park cafe after which our guide will take us to explore Holland Park and the Kyoto Japanese Garden.

There will then be free time for lunch in Kensington High Street or in the park if you want to bring a packed lunch, after which we take a walking tour to see the beautiful studio houses of the Holland Park Set.

Our final visit will be to Leighton House, owned by a founding member of the Holland Park Circle, Sir Frederick Leighton. In it you will find an astonishing room – an Islamic courtyard reimagined into a London drawing room - which has been used as a set in various TV programmes and films including Nicholas Nickleby and an episode of Spooks. On display in the house are works of art by members of the Pre-Raphaelite Brotherhood including Burne-Jones, Watts and Millais as well as 81 oil paintings by Leighton himself. More details on website:

https://swanley.u3asite.uk/u3a_events/the-holland-park-set-politics-painters/

Cost £58.

A full day trip:

Leaving Hextable at **8.30am** & Swanley at **8.45am**. Returning approx. **6.15pm**.

NOTE: I have now booked a larger coach so there are still places available for this outing. Please sign up and pay at the March meeting or sign up via website (link above).

Veronica Brazier

16th May Dave Collins will be watching Day 2 of the 4-day county cricket game- Middlesex v Derbyshire at Lord's. Travel to Lord's by public transport and tickets for the game will cost £10 for seniors (over 65). https://swanley.u3asite.uk/u3a_events/cricket-at-lords-cricket-ground/

Pay as you go and please see Dave if you would like to join him on that day.

Dave Collins

June

Thursday June 3rd

'Hidden London and Regents Canal'

In 1666 the Great Fire swept away much of London, but as the flames died to ashes, one corner was untouched. The morning tour includes the precincts of St Paul's Cathedral, a rose garden in the haunted ruins of Christ Church Greyfriars, where four queens were buried, Post man's Park, home to very touching Art Nouveau ceramic plaques of the Watts Memorial to Heroic Self Sacrifice, historic Smithfield and London's oldest parish church, St Bartholomew the Great. We have coffee in Paternoster Square, and at the end of the gentle walking tour you are free to have lunch in the many pubs and cafes in the area.

After lunch we travel to Little Venice to board our boat for a 50 minute journey along the Regents Canal to Camden Lock, the guide pointing out places of interest along the way. There should be time there for refreshments in Camden before we take our coach back at 5pm.

This trip includes: A Blue Badge guide throughout Morning coffee 50 minute Canal trip

Cost: £62

Full Day Trip

Leaving Hextable at **8.30am** & Swanley at **8.45am**. Returning approx. **6.15pm**.

I am very sorry but this trip won't be suitable for those with rollators as the narrow boat can't take them. It is a gentle, flat walking tour of about 1 kilometre (approx. half a mile) with opportunity for stops and chances to sit down.

I will be taking cheques at the March and April meetings or you can contact me via our website at:

https://swanley.u3asite.uk/u3a_events/hidden-london-and-regents-canal/

Sandra Treloar

The Social Committee are planning lots of events/outings for the rest of the year:

Other proposed outings for later in the year:

Tiptree Farm and Museum (*Possibly July*)

William Morris Museum (*Possibly August*)

Which some of you were disappointed to miss when it had to be cancelled last year

Day at the Oval to watch a 1-day game **Surrey v Kent** (*August 5th*)

Day trip to Lewes which some of you have requested (*Possibly September*)

Theatre trip **More details to follow.** (*Possibly Oct – November*)

Penny Collins

MEMBERSHIP for 2026 – 2027

Renewals

The renewal process is now underway.

We would like everyone to renew by the end of March please.

Our membership year begins at the beginning of April 2026 and runs until March 2027. The cost remains at **£20**.

We start to take renewals from January, to ease the burden for the Treasurer and the Membership Secretary. For anyone renewing now, the membership is valid until the end of March 2027.

Payment can be made by cash or cheque at a monthly meeting. Cheques made payable to **Swanley and District U3A** please. **Collect your card at the meeting.**

If possible, we like it if the £20 subscription is paid by bank transfer. You can do this at any time.

The bank details are:

Bank: Natwest

Account number: 51170027

Sort code: 60 21 10

Account name: Swanley & District U3A

IMPORTANT When the bank asks for a **reference**, please put the **surname and your membership number** so we know who made the payment! (For example – **BAKER33**).

PLUS They need to confirm that they have made this payment by contacting Gill Baker via the Membership page on the U3A website: <https://swanley.u3asite.uk/membership/> or by letting her know at a meeting.

If they are paying for a spouse or partner in addition to themselves, they should provide both names in the email.

Don't forget to collect your membership cards from Gill when you have paid your renewal fee.

WE STILL NEED NEW MEMBERS TO SIGN UP

SO PLEASE HELP BY ENCOURAGING YOUR FRIENDS TO JOIN!

If you know anyone who wants to join us, please tell them that they are welcome to come to any monthly meeting to see what we do before committing to membership.

If they decide to go ahead, they should fill in a form with their contact details. Forms are available from Gill Baker Membership Secretary at our meetings or via website address shown above.

I hope this covers everything – please contact me via the website if you need any clarification.

Many thanks!

Gill Baker Membership Secretary

GROUP / EVENTS NEWS

Antiques and Collectables

Our theme this month was The Sea and Seashore. Once again, we were surprised at the variety of items brought along by our members.

John and I recently went on a Mudlarking event on the Thames foreshore at Rotherhithe. This was where ships were broken up to reuse the timber for building. There were lots of piles of very old large and small nails lying about, which were left behind as not reusable.



On the same visit, I found a small glass object - I was advised by our guide that it was half of a Penny Lick glass. Originally it had a short thick stem. In Victorian times these were served by street traders with small amounts of ice cream in the shallow depression. After a quick lick, the glass was returned to the vendor, who gave it a wipe and refilled for the next customer. They were banned in London in 1899 when it was realised that they were contributing to the spread of cholera and tuberculosis. Subsequently, this led to the use of wafer cones.

I also showed the group a glass fisherman's float which was a replica of one that I found on a Cornish beach in the 1960s. They were commonly used in the second half of the 19th century and early 20th century, but were replaced by wood and cork and later, plastic or Styrofoam.



Tom and Sue brought along a large painting of the SS Berlin which has been passed down the family from Tom's great grandmother. Tom's great uncle Charles was a deck hand on the boat from the age of 14. The boat was built in 1894 and was used to ferry people from Harwich to the Hook of Holland. Sadly the boat was lost in February 1907 in bad weather nearing Holland. The ship broke in two and 128 of the 144 people on board died, including Charles and about 40 other crew members. The family do not know who painted their picture – in 1986 it was valued at £300.

Penny has her father's medals from WW2 – a Burma Star and an Atlantic Star. He was in the Navy on an aircraft carrier. He was involved in anti-submarine operations and was subjected to attacks by three kamikaze aircraft which fortunately failed in their mission.

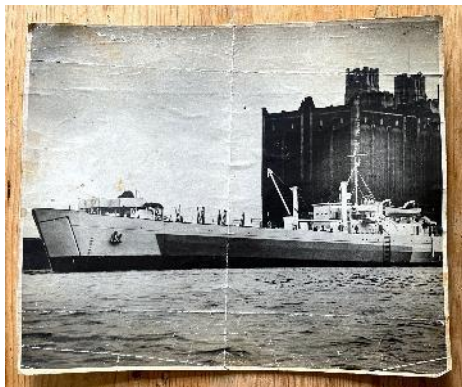


Judy's husband Bob's grandfather Robert Wilson was a sailor in WW1 and joined up at the age of 18. He served on HMS Duke of Edinburgh and the HMS Cressy, which was sunk by a German submarine in 1914. Judy has his discharge papers from June 1924 and 1928, after he had worked for a few years in the merchant navy



On a different note, Wendy showed us a polished stone which is believed to be a Orthoceras Nautiloid, a squid like creature that lived millions of years ago. Bought by Tony, it was found in the Atlas mountains in Morocco. The Orthoceras could grow up to four metres long and is an ancestor of the octopus and squid.

We liked the pewter salts brought by Sheila. They are in the shape of Viking long ships and have dragon's heads and matching spoons. They were sold to tourists in Norway in the 1940s and 50s.



Sheila also brought along a photo of a navy ship that her father was on in WW2 - a tank landing ship which was built in Canada in 1941. It was used to carry troops and vehicles to the beaches in Burma. Sheila's father was an anti-aircraft gunner and also received a Burma Cross.

Dave has a piece of 'trench' art in the form of a small lighter. This is made from a large metal nut and two penny coins, one dated 1936. He found it in his father's possessions but is not sure where it came from. He doesn't think his father made it himself. An interesting piece.



Lastly, Jenny showed us a large jug in the form of Lord Nelson. She collects Nelson memorabilia and thinks that this was sold after Nelson's funeral. We liked the colourful design and large scale of the figure.

Gill Baker

Bridge Group

This month's question:

North; ♣ AJ7 ♦ AK5 ♥ KQ73 ♠ KJ8
 South; ♣ Q8542 ♦ J3 ♥ A8 ♠ T974

What will north open? What does south know about his hand. What will south do next?

Answer next month

** Reminder and answer to last month's question:

North ♣ KQ853 ♦ AK9 ♥ QT73 ♠ A
 South ♣ T9 ♦ QJ632 ♥ KJ96 ♠ K2

What will north open? What will south reply? On North's second bid how will he tell South he has lots of high card points, and what will he bid? How do you foresee the bidding progressing?

North has; 18 points, 5 clubs and 4 hearts.

Enough points to open the bidding so bids the longest suit - 1 club.

South has; 10 points, 5 diamonds and 4 hearts.

Enough points to reply so bids the longest suit – 1 diamond.

North's biggest task now is to let his partner know he has lots of points and a second biddable suit. He can do this by jump bidding into his second suit (ie missing a level). Instead of bidding 1 heart he now jump bids to 2 hearts.

As South also has 4 cards in hearts so they have found a suit fit. He will now be thinking this is going to be the trump suit (at least 8 trumps between the 2 hands). His partner has indicated he has a lots of points (18 required for a bid called a jump shift) and South also has more than minimum points so will bid straight into the game contract of 4 hearts.

Carolyn & Colin Chapman

Sports Group

U3A Members enjoying an afternoon of Tenpin Bowling at Bexleyheath, Big thank you to Bill for organising.



Rod Sharman

Geography Group

Each month the Group study various elements of a different country, state or area - in February the Group studied Japan.



Did you know that:

- Japan consists of 14,125 islands spread over 2,000 miles.
- There is almost no immigration in Japan. The population is 98.5% ethnic Japanese.
- The Cherry -blossom season runs from January through to May, progressing from Okinawa in the south to Hokkaido in the north.
- Rivers have relatively short lengths, steep gradients, and rapid flow - often compared to waterfalls more than rivers.
- Japan's birth rate and population are falling and its ageing and shrinking population is causing labour(sic) shortages.
- The highest recorded temperature in Japan was 41.8°C (107.2 F) on 5 August 2025.
- Two types of bears are found in Japan and the number of people killed by bear attacks has reached a record high.
- Emperor Hirohito died in 1989 after reigning for more than 60 years.
- Japan experiences a monthly average of 84 earthquakes.
- The object of Sumo is to force the opponent out of the ring or to the canvas, but contestants can also lose if their loincloth comes off!
- Japan is the world's 5th. largest economy having just been surpassed by India.
- Shinto and Buddhism, the two main faiths, are often practiced simultaneously.
- Number 4 is considered unlucky, as the word for "four" sounds similar to the word for "death".
- Geisha means "person of the arts" and they are not prostitutes.
- Most toilets in Japan have a built-in bidet system for spraying your backside.
- Japan has 3.9 million vending machines (one for every 32 people) offering anything from drinks to sex toys and live crabs.



Colin Annetts

Bird Watching

8 brave members battled cold strong winds at Oare Marshes. Thanks to all that joined me, including several new members, we did see some good birds.

We saw the following birds: Great Crested Grebes, Cormorants (including a continental male),

Little Egret, Great White Egret, Herons, Mute Swans, Graylag Geese, Mallards, Lots of Pintails, Gadwall, Wigeon, Teal, Shovelers, Shelducks, Marsh Harriers, Kestrel, Moorhens, Coots, Oystercatchers, Lapwing, Turnstones, Snipe, Curlews, Redshanks, Dunlin, Avocets, Gulls, Woodpigeons, Collared Doves, Kingfisher, Skylark, Starlings, Magpies, Rooks, Carrion Crows, Dunnock, Robins, Blackbirds, Reed Bunting, Meadow Pipit.





Bob Parker

History of London Charlie Chaplin Walk

Members of the London History Group recently took part in a “Charlie Chaplin” walk in and around the streets of Kennington and Lambeth. We met our guide, Robert, outside the local underground station. It was easy to recognise him as he was dressed like Charlie Chaplin!

During the next two hours we walked the streets which would have been very familiar to the young Chaplin. We listened to stories and anecdotes and learned a great deal about the actor’s early life. This is now a fairly pleasant district, but it would have been very different in the 1890’s. To describe his childhood as difficult would be an understatement.



We started at the church where his parents married. They were both music hall performers, but later experienced personal problems. His mother had mental health issues and his father developed an addiction to drinking and gambling.



St Mary's Church



Charlie's Parents



A Young Charlie



We saw the workhouse where a young Charlie and his brother, Sydney, were occasional residents.

Renovated Parts of the Workhouse Complex

Other Parts still in its original state




Dugard Way

We found the houses where the family lived and his uncle's pub.

This where Charlie learned to tap dance. The famous walk of the tramp in his films was copied from a character who was a regular at the pub.



Bowden Street where Charlie lived



Charlie's Patch

This community garden was formerly abandoned waste ground. Local residents began to grow plants here in 2011. It was re-landscaped in 2025 using ideas from residents to make the garden sustainable and to attract more bees and butterflies. It's called Charlie's Patch as it is overlooked by the house where Charlie Chaplin once lived as a young boy. The activity he watched from his doorstep was to inspire his famous character and films.

Thanks to all our volunteers and supporters, NAO Landscapes Ltd, London Borough of Lambeth's Changing Lives Social Value Fund, Berkeley Homes.

Cleaver Square, Cleaver Street and Bowden Street Residents' Association and Heart of Kennington Residents' Association.

Berkeley
Designed by us



Bowden Street



Chaplin eventually overcame adversity and joined a music hall clog dancing troupe – “Eight Lancashire Lads”. Later he joined Fred Karno’s Comedy Company. This resulted in a tour of North America. Charlie and Sydney made a permanent move to the USA and entered the world of films. The rest is history as they say!

It was an enjoyable and informative morning. We were grateful to our guide who was keen to share his considerable Chaplin knowledge with us.



John Baker

Looking at Art outing to the National Gallery

We visited the Neo Impressionist exhibition at the National Gallery. This was a collection of art put together by German born Helene Kroller –Muller from 1912 until her death in 1939. She amassed over 11500 works and set up a museum in the Netherlands which opened a year before her death – the Kroller-Muller Museum.

Many of the artworks in the exhibition were Pointillist in style – painted with small dots of pure colour which blend together when viewed from a distance, to create an illusion of colour and light. This style was pioneered by Georges Seurat (1859 – 1891). He had a passion for logical abstraction and an almost mathematical precision of mind. Other artists used a similar approach, sometimes with dashes of colour instead of dots.

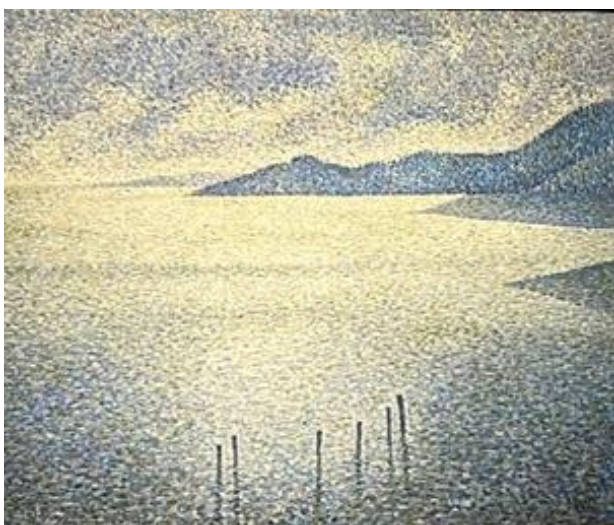


Chahut – Seurat



Study for A Sunday at La Grande Jatte – Seurat

There were several works by Seurat, and other famous artists such as Signac, Van Gogh, and Pissarro. Alongside these were others less well known to me – Anna Boch, Maximillien Luce, Theo Van Rysselberghe and Jan Toorop. Many of the subjects depicted by these artists reflected the lives and landscapes of those they believed to be the exploited classes – both rural labourers and urban workforce. Some others were just reflections of daily life, without obvious political meaning.



Coastal Scene – Theo Van Rysselberghe



Morning after the strike – Jan Toorop



The Sower – Van Gogh

Seurat made over 100 studies for his famous 'A Sunday on La Grande Jatte' and several were on display. In the example here, Seurat experimented with placement of some of the figures, and used dashes rather than dots of colour.

I thought this was a very interesting exhibition as it included a larger number of artists painting using pointillism than I had been aware of, and we had an insight into their development of ideas and influences.

Gill Baker

Swanley and District u3a Committee Members 2025/2026

			
Dave Collins Chair	John Baker Vice-Chair	Carol Willingham Business Secretary	Clive Rayner Treasurer
			
Gill Baker Membership Secretary	Gill Morrin Minutes Secretary	Penny Collins Social Secretary	Alan Hayward Newsletter/Website
			
Nicola Teoh Speaker Organizer	Vacant Publicity Secretary	Sandra Evans Group Co-Ordinator	Susan Baugh Assisted Treasurer

Contact Details

Chair	David Collins
Vice Chair	John Baker
Business Secretary	Carol Willingham
Membership	Gill Baker
Social/Outings Coordinator	Penny Collins
Group Co-ordinator	Sandra Evans
Newsletter and Website	Alan Hayward

You can contact any of the above committee members by going to the Swanley & District Website committee page at <https://swanley.u3asite.uk/contact/> and clicking on the appropriate name.

Website: <https://swanley.u3asite.uk/>

The views and opinions expressed in this newsletter are of a general nature and do not necessarily reflect the official policy or position of Swanley and District u3a or any part of The Third Age unless specifically stated. All rights reserved, any reproduction without permission is prohibited.

Swanley u3a Groups Timetable

Group	Leader	Meeting Day
Antiques and Collectables	Gill and John Baker	3 rd Tuesday Morning
Art and Craft	Penny Collins	2 nd Tuesday Afternoon
Art Appreciation	Margaret Austin	1 st Monday Morning
Art/Painting & Drawing Art Outdoors	Gill Baker	2 nd & 4 th Tuesday Evening
Art – Looking at Art	Gill & John Baker	As Notified in Newsletter/Website
Bird Watching	Bob Parker	3 rd Tuesday /Wednesday as notified in Newsletter / Website
Board & Card Games	Joyce Wood	2 nd or 4 th Mon pm Howard Cen Hex
Book Group	Sue Scott & Wendy Keable	2 nd Monday pm Swanley Library
Bowls (Indoors)	Bob Mellor	4 th Thurs pm at the Whiteoak's
Bridge	Carolyn & Colin Chapman	1 st Wednesday Morning
Chess	Terry Bennet	4 th Wednesday Morning
Creative Writing	Penny Collins	1 st Thursday Morning
Croquet	Bill Hammond	Every Weds at 2pm Swanley Rec Gardens
Gardening	Sandy English	4 th Wednesday Afternoon
Geography	Penny and Dave Collins	3 rd Friday Morning
History Modern	Jackie Griffiths	4 th Tuesday Afternoon
History of London 1	John Baker	2 nd Thursday Morning
History of London 2	John Baker	4 th Thursday Morning
Kurling	Bill Hammond	Every Mon 10—12. White Oak
Let's Speak French	Barbara Ramsey	1 st & 3 rd Wednesday Morning
London History Walks	Alan Hayward/John Baker	As Notified in Newsletter/Website
MOTO (Members on their own)	Madeleine Opitz	3 rd Thursday at 12.15 Elim Church Swanley
Music Making	Mark Fittock	Every Tuesday Morning
Petanque	Bill Hammond	Weds 2pm Princes Park Dartford
Photography (Digital)	Alan Hayward	2 nd Friday Afternoon
Play Reading	Penny Collins	4 th Friday Morning
Quiz Team	Dave Collins	As Notified in Newsletter/Website
Rugby-Walking & Appreciation	Alan Hayward/John Baker	As Notified in Newsletter/Website
Spanish	Ruth Wilkinson	Every Thursday Morning
Strollers		Not meeting at Present
Table Tennis	Bill Hammond	1 st & 3 rd Friday 2-3.30pm White Oak
Outings and Theatre Trips	As Notified by the Social Committee	
Word Magic on Zoom	Gill Heath	2 nd Wednesday Morning
Walking Group	Clive Rayner	As Notified in Newsletter/Website
Wine and Dine	Santha Blankley	As Notified in Newsletter/Website
Wine Tasting	Robert Brickell	4 th Wednesday Evening